

No Ends

The two color striped scarf
with no ends to weave in as you go.

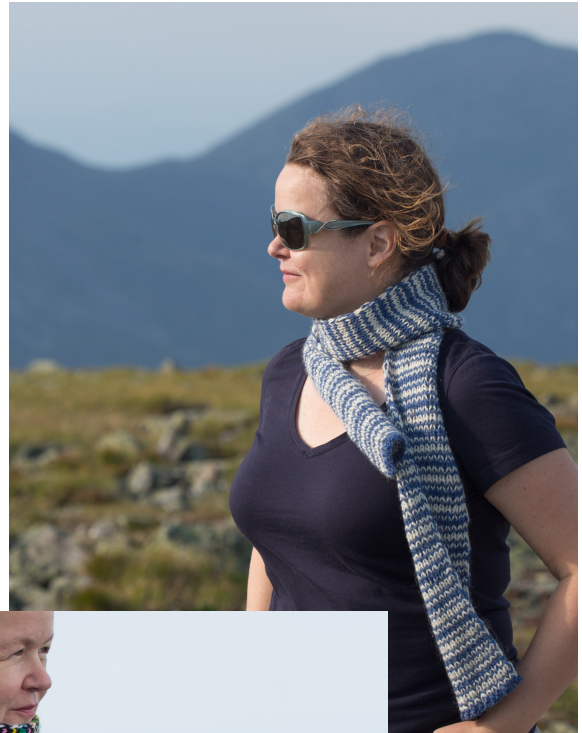
Skills Required

- Rib stitch
- Casting on
- Stretchy bind off

Materials

Needles/Notions

- **Circular Needles**
size **US8/5mm**
at least **16"**
You could use straight needles
but they must have points
at both ends
- **4"x4" K1,p1 swatch:** 24 st x 22 rows



Yarn/Size

scarf, photo seen above	main color	contrasting color	finished size in inches	# of stitches cast on	number of chart repeats
Black and multi-color	220 yards of worsted weight <i>Cascade 220 Superwash Black</i>	220 yards of worsted weight <i>Lady Dye Yarns super wash "Lucy N'Diamonds"</i>	6" x 64"	48	47
Blue and white	140 yards of worsted weight. <i>Green Mountain Spinnery "Mountain Mohair" Blue Gentian</i>	140 yards of worsted weight. <i>Green Mountain Spinnery "Mountain Mohair" Edelweiss</i>	5.5" x 57"	32	43

Glossary

BO - bind off

CO - cast on

k - knit

p- purl

slp - slip stitch purlwise, leaving yarn in front. This way, when you turn the shawl over to work the next row, the yarn is waiting in the back.

Stretchy Bind Off - Bind off loosely with larger needles, or with a stretchy bind off.

References

For an example of Jeny Staiman's Surprisingly Stretchy Bind Off

see Cat Bordhi's Video: <https://www.youtube.com/watch?v=abBhe-JYmgI>



Designer Contact Information

Heather Classen

Knitwear designer, electrical engineer, loves science & tech, good stories, nice colors, and any diorama anywhere.

URL: <http://www.heatherclassen.com>

EMAIL: askHeather@spatialH.com

RAV STORE: <http://www.ravelry.com/patterns/sources/heather-classens-ravelry-store>

Credits

Photography: Aram Comjean

Pattern Notes

- Carry the two colors along as you go.
- Rows 3, 4, 7, & 8 are knit across in one direction without returning with that same color.
- This pattern is entirely the K1,P1 rib stitch, but if you prefer you can knit the entire thing with garter stitch.

No Ends Scarf

Instructions

CO 48 (or 32 depending on skein size, see table on page 1) **of the Main Color (MC)**

MC Row 1: (K1, p1) to one before end, slp.

MC Row 2: Same as Row 1.

Work chart for Rows 3 through 10. Written directions follow.

CC Row 3: Same as Row 1, knitting both colors together in the first stitch to carry strands up.

MC Row 4: Same as Row 1.

CC Row 5: Same as Row 1, knitting both colors together in the first stitch.

CC Row 6: Same as Row 1.

MC Row 7: Same as Row 1, knitting both colors together in the first stitch.

CC Row 8: Same as Row 1.

MC Row 9: Same as Row 1, knitting both colors together in the first stitch.

MC Row 10: Same as Row 1.

Continue by repeating Rows 3 through 10 until scarf is 56" to 64" long.

MC Second to last row: Same as Row 1

MC Last row: Same as Row 1

Bind off loosely.

Block if desired.

CHART

